

BIMETAL THERMOMETER

Accuracy class 1
all stainless steel



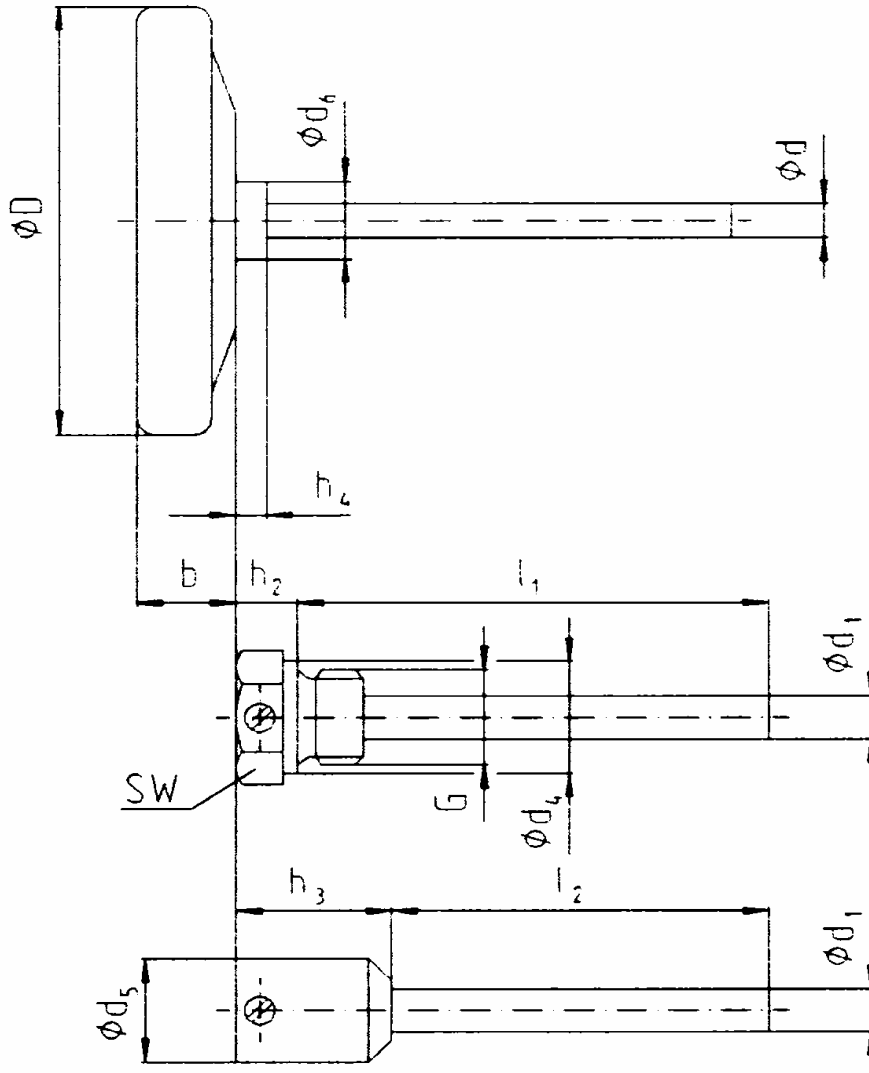
This high-quality version is especially suitable for the many-sided use in mechanical, tank, rapidly flowing and machinery engineering as well as in the heating industry.

Model	10			Options
Nominal size	100			63, 80, 160
Symbol				
Accuracy class	1			
Dial division		aluminium, dull	white	
Measuring ranges and scale division	-30...+50°C			-10...50°C
	-20...+60°C	0,5°C	acc. to DIN	0...80°C
	0...60°C			0...100°C
	0...120°C			scale °F
	0...160°C	1°C	acc. to DIN	dual scale °C/°F
	0...40°C			
	0...200°C			
	0...250°C		acc. to DIN	
	0...400°C			
Application	constant load: full scale, short time up to 1 h; 1.2 of full scale			
Pressure on the protecting tube	Cu-alloy = max.6 bar; St 35, 1.4571 = 25 bar Attention: additional order!			
Case / ring	1.4301			
Adjustment	variable pointer / adjust - screw at the end of the tube			
Pointer	aluminium black, variable pointer			
Window	flat instrument glass			
Plain stem	dmr. 8mm, back centric			
Connection	flat, with admission for the protecting tube You could use the thermometers only together with a suitable protecting tube.			with thread G 1/2" or M20*1,5
Plain stem length	(45), 63, 100, 160, 200, 250, 300, 400			others on request
Protection	IP 43 (EN 60529/IEC 529)			
Approx. Weight (kg)	0,15			

04/08

Type 10

Typ	Dimensions in mm														l ₁	l ₂
	D	d	b	d ₁	d ₄	d ₅	d ₆	h ₂	h ₃	h ₄	G	SW				
10 063	63	8	16	10	26	24	18	13	33	8	G1/2	27	45, 63, 100, 150, 200, 250, 300, 400 and on request	43, 80, 140, 180		
10 080	80	8	17	10	26	24	18	13	33	8	G1/2	27				
10 100	100	8	21	10	26	24	18	13	33	8	G1/2	27				
10 160	160	8	25	10	26	24	18	13	33	8	G1/2	27				



Additional necessary:

Protecting tube with lateral

screw:

Thread G 1/2A Cu-alloy, St35, 1.4571

or

Weld in type protecting tube St35, 1.4571

Technical details subject to change
without notice!