



PRESSURE SWITCHES
PRESSURE DIFFERENCE SWITCHES
VACUUM SWITCHES
From 1.5 mbar to 600 bar

High Proof High Range Flameproof Switch

CATALOGUE



Certificate No.: FM 72815

Kaustubha Udyog AN ISO9001:2000 COMPANY

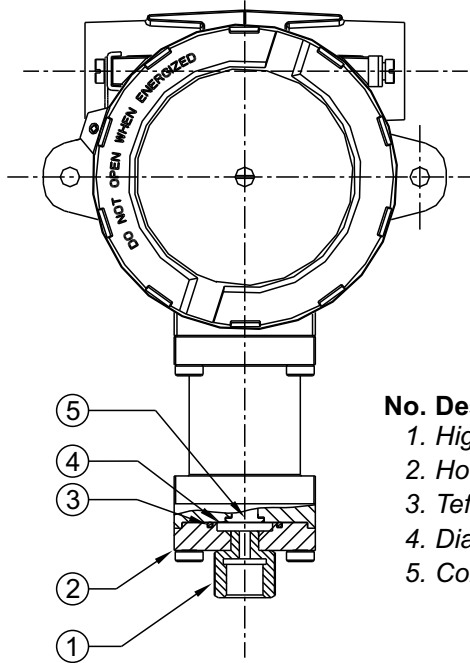
S. No. 36/1/1, Sinhgad Road, Vadgaon Khurd,
Near Lokmat Press, Pune 411 041 INDIA
Tel.: +91-(0) 20-24393577 / 24393877
Telefax : +91-(0) 20-25460486 / 24393577
Email : pressure@vsnl.com

Website : <http://www.orion-instruments.com>

FC/FM HIGH PROOF HIGH RANGE SWITCHES



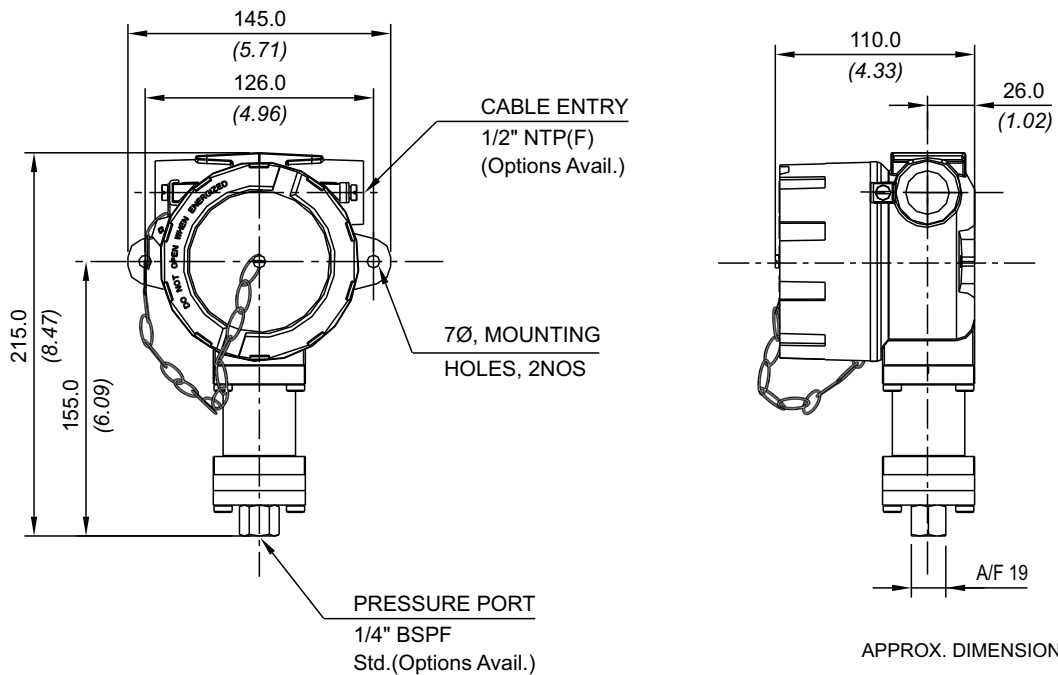
PRESSURE CAPSULE DETAILS



- No. Description**
1. High Pressure Port
 2. Housing Plate
 3. Teflon® O-Ring
 4. Diaphragm
 5. Conical Plunger

Note : *wetted parts* are mentioned in italics.

INSTALLATION DRAWING



BULLETIN NO. : KA081219

HIGH PROOF HIGH RANGE SWITCHES FC/FM

RANGE SELECTION TABLE

| Range Code | Range bar (psi) | Differential* bar (psi) | Maximum Working Pressure bar (psi) |
|------------|--------------------------------|--|------------------------------------|
| | | Approximate Maximum for "A1" microswitch | |
| P01 | 0.1 - 1.0 (1.45 - 14.50) | 0.20 (2.86) | 70 (1000.00) |
| P02 | 0.1 - 1.5 (1.45 - 21.76) | 0.24 (3.48) | 70 (1000.00) |
| P03 | 0.2 - 2.6 (2.90 - 37.71) | 0.34 (4.92) | 70 (1000.00) |
| P04 | 0.2 - 3.6 (2.90 - 52.21) | 0.40 (5.80) | 70 (1000.00) |
| P07 | 0.5 - 7.0 (7.25 - 101.50) | 0.80 (11.44) | 70 (1000.00) |
| P10 | 0.5 - 10.0 (7.14 - 142.86) | 0.80 (11.44) | 70 (1000.00) |
| P15 | 1.0 - 15.0 (14.29 - 214.29) | 1.60 (22.86) | 70 (1000.00) |
| P30 | 5.0 - 25.0 (71.43 - 357.14) | 1.60 (22.86) | 70 (1000.00) |

*Minimum differential increases with setpoint, values with neoprene diaphragm (Graphs available on request)

* Differentials of microswitches A2 through A9 will vary. Differentials for A7 are typically twice that for A1 microswitch. Please indicate specifically the differential value in enquiry/order, when it is critical in your application.

FC/FM HIGH PROOF HIGH RANGE SWITCHES

HOW TO ORDER INDUSTRIAL HIGH PROOF HIGH RANGE PRESSURE SWITCHES

| Group 1 | Group 2 | Group 3 | Group 4 | Group 5 | Group 6 | Group 7 | Group 8 |
|---|--|---|---|---|--|--|--|
| Non standard allocation | Model | Cable Entry Size | Switch Type | Range Code (values in bar) | Microswitch Type | Pressure Port Size | Diaphragm |
| <input type="checkbox"/> Reserved for non-standard options not covered in catalogue. Will be given by manufacturer, only after agreement of supply details with customer. | FC = Flameproof pressure switch with Aluminium head as per IS2148 for Gas Gr. IIC FM = Flameproof pressure switch as per IS2148 : for Gas Gr. I | 1 = ½" NPT threads for aluminium housing 2 = ¾" NPT threads for aluminium housing 3 = M20 X 1.5 threads for aluminium housing 4 = ½" NPT threads for CI housing 5 = ¾" NPT threads for CI housing 6 = M20 X 1.5 threads for CI housing | P1 = pressure switch P2 = pressure switch with range scale in bar P3 = pressure switch with scale in psi | P01 = (0.1 - 1.0) P02 = (0.1 - 1.5) P03 = (0.2 - 2.6) P04 = (0.2 - 3.6) P07 = (0.5 - 7.0) P10 = (0.5 - 10.0) P15 = (1.0 - 15.0) P30 = (5.0 - 25.0) | A1 = General purpose microswitch rated at 15 A; 250 VAC A2 = Hermetically sealed for corrosive environments A3 = gold plated contacts for low voltage applications A4 = DPDT configuration A5 = for high DC ratings A6 = elements with adjustable deadband A7 = 2SPDT switching elements A9 = General purpose microswitch rated at 5 A; 250 VAC * Some microswitches may not be available for particular ranges. Please check with sales office. | S1 = SS316 pr. Housing with ¼" BSPF pressure port S2 = SS316 pressure housing with ¼" NPT(F) pressure port. | 0 = Neoprene 1 = Teflon 2 = SS 316L |

eg. A high proof high range flameproof switch with ½" NPT cable entry in aluminium housing as 1SPDT pressure switch, fixed differential without scale, having 0.1 bar to 1 bar pressure range, with 15Amp. microswitch, SS316 pressure housing with ¼" BSP port size & SS316L diaphragm shall be specified by

| Group 1 | Group 2 | Group 3 | Group 4 | Group 5 | Group 6 | Group 7 | Group 8 |
|--------------------------|---------|---------|---------|---------|---------|---------|---------|
| <input type="checkbox"/> | FC | 1 | P1 | P01 | A1 | S1 | 2 |

Please specify full model number to avoid ambiguity.