

## MSD9 - Manometer DN 100 with monoblock seal

Simplified catalogue sheet for a complete set of deformation stainless steel manometer DN 100 with monoblock seal, for the most common ranges.

### Manometer

- all stainless steel, DN 63, instrumental glass
- bottom (type 6035) or back-side (type 6036) connection
- glycerine filling (option)

### Chemical seal – all welded – monoblock

- process: G1/4" male (entry bore 6 mm)
- process: G1/2" male (entry bore 10 mm)

**Type W40: Diameter 40 mm / PN 160,**

**Type W50: Diameter 50 mm / PN 40**

- diaphragm material: stainless steel AISI 316L (1.4435)
- body material: stainless steel AISI 316L (1.4404)

### Filling liquid

- Neobee (FDA approved)
- glycerine (FDA approved)
- silicone oil
- almond oil

### Temperature conditions:

- medium: -20 ... +100 °C
- ambient: -20 ... +60 °C

### Customer options:

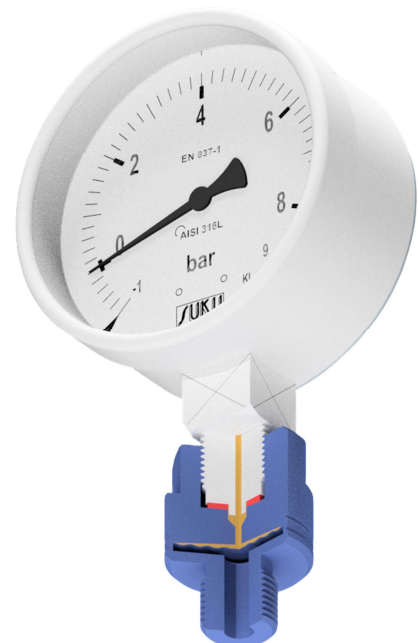
Chemical seals can be assembled with various gauges or with other ranges only by agreement and after technical verification. Dial with another scale unit is possible by agreement as well (kPa, MPa, PSI, ...).

Another temperature conditions must be consulted!

### Additional information:

Complete information of monoblock connections is given in the seal data sheet.

More detailed information of the manometer - see the catalogue sheet of all-stainless steel manometers.



**Ordering code:**

|                                     |                          |   |   |   |   |   |  |  |  |   |   |  |  |  |  |  |  |  |   |
|-------------------------------------|--------------------------|---|---|---|---|---|--|--|--|---|---|--|--|--|--|--|--|--|---|
| MSD9 -                              | W                        |   |   | - |   |   |  |  |  |   |   |  |  |  |  |  |  |  |   |
| type W40                            |                          | 4 | 0 |   |   |   |  |  |  |   |   |  |  |  |  |  |  |  |   |
| type W50                            |                          | 5 | 0 |   |   |   |  |  |  |   |   |  |  |  |  |  |  |  |   |
| Manometer with bottom connection    |                          |   |   |   | 3 | 5 |  |  |  |   |   |  |  |  |  |  |  |  |   |
| Manometer with back-side connection |                          |   |   |   | 3 | 6 |  |  |  |   |   |  |  |  |  |  |  |  |   |
| Manometer with glycerine filling    |                          |   |   |   |   |   |  |  |  |   |   |  |  |  |  |  |  |  | G |
| Manometer without filling           |                          |   |   |   |   |   |  |  |  |   |   |  |  |  |  |  |  |  | N |
| Pressure range:                     | 0 ... 1 bar              |   |   |   |   |   |  |  |  | 0 | 1 |  |  |  |  |  |  |  |   |
|                                     | 0 ... 1,6 bar            |   |   |   |   |   |  |  |  | 0 | 2 |  |  |  |  |  |  |  |   |
|                                     | 0 ... 2,5 bar            |   |   |   |   |   |  |  |  | 0 | 3 |  |  |  |  |  |  |  |   |
|                                     | 0 ... 4 bar              |   |   |   |   |   |  |  |  | 0 | 4 |  |  |  |  |  |  |  |   |
|                                     | 0 ... 6 bar              |   |   |   |   |   |  |  |  | 0 | 6 |  |  |  |  |  |  |  |   |
|                                     | 0 ... 10 bar             |   |   |   |   |   |  |  |  | 1 | 0 |  |  |  |  |  |  |  |   |
|                                     | 0 ... 16 bar             |   |   |   |   |   |  |  |  | 1 | 6 |  |  |  |  |  |  |  |   |
|                                     | 0 ... 25 bar             |   |   |   |   |   |  |  |  | 2 | 5 |  |  |  |  |  |  |  |   |
|                                     | 0 ... 40 bar             |   |   |   |   |   |  |  |  | 4 | 0 |  |  |  |  |  |  |  |   |
|                                     | 0 ... 60 bar (W40 only)  |   |   |   |   |   |  |  |  | 6 | 0 |  |  |  |  |  |  |  |   |
|                                     | 0 ... 100 bar (W40 only) |   |   |   |   |   |  |  |  | H | 1 |  |  |  |  |  |  |  |   |
|                                     | 0 ... 160 bar (W40 only) |   |   |   |   |   |  |  |  | H | 2 |  |  |  |  |  |  |  |   |
|                                     | -1 ... 0 bar             |   |   |   |   |   |  |  |  | P | 0 |  |  |  |  |  |  |  |   |
|                                     | -1 ... +0,6 bar          |   |   |   |   |   |  |  |  | P | 1 |  |  |  |  |  |  |  |   |
|                                     | -1 ... +1,5 bar          |   |   |   |   |   |  |  |  | P | 2 |  |  |  |  |  |  |  |   |
|                                     | -1 ... +3 bar            |   |   |   |   |   |  |  |  | P | 3 |  |  |  |  |  |  |  |   |
|                                     | -1 ... +5 bar            |   |   |   |   |   |  |  |  | P | 5 |  |  |  |  |  |  |  |   |
|                                     | -1 ... +9 bar            |   |   |   |   |   |  |  |  | P | 9 |  |  |  |  |  |  |  |   |
| Filling liquid:                     | silicone oil             |   |   |   |   |   |  |  |  |   |   |  |  |  |  |  |  |  | S |
|                                     | almond oil               |   |   |   |   |   |  |  |  |   |   |  |  |  |  |  |  |  | M |
|                                     | neobee                   |   |   |   |   |   |  |  |  |   |   |  |  |  |  |  |  |  | N |
|                                     | glycerine                |   |   |   |   |   |  |  |  |   |   |  |  |  |  |  |  |  | G |
| Process thread:                     | G1/4" male               |   |   |   |   |   |  |  |  |   |   |  |  |  |  |  |  |  | G |
|                                     | G1/2" male               |   |   |   |   |   |  |  |  |   |   |  |  |  |  |  |  |  | G |
|                                     |                          |   |   |   |   |   |  |  |  |   |   |  |  |  |  |  |  |  | 1 |
|                                     |                          |   |   |   |   |   |  |  |  |   |   |  |  |  |  |  |  |  | 4 |
|                                     |                          |   |   |   |   |   |  |  |  |   |   |  |  |  |  |  |  |  | 1 |
|                                     |                          |   |   |   |   |   |  |  |  |   |   |  |  |  |  |  |  |  | 2 |

**Recommended minimum pressure range of the manometer:**

| Seal type | Min range |
|-----------|-----------|
| W40       | 1 bar     |
| W50       | 1 bar     |

**Dimensions:**

