

Chemical seal type C / Clamp Tri-Clamp DIN 32676 respectively ISO 2852

Chemical seals are used to prevent the measured medium from entering the measuring unit of the pressure gauge. It is used when measuring the pressure of solidifying, crystallising or hot liquids or where it is necessary to ensure that the system can be cleaned of product residues.

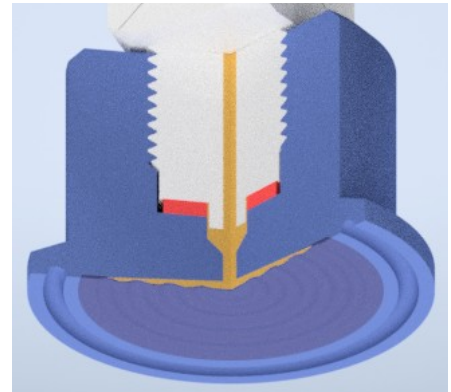
Clamp seals are used especially in the food and pharmaceutical industries. They are sanitizable and therefore suitable for CIP, SIP. They comply with the EC 1935/2004 and EC 2023/2006 standards on hygiene requirements for products in direct contact with food.

Material

- Diaphragm: SS 316L (1.4435),
tantalum, Hastelloy on request
PTFE coating on request
- Body: SS 316L /1.4404
- Wetted part - roughness max. Ra 0,6

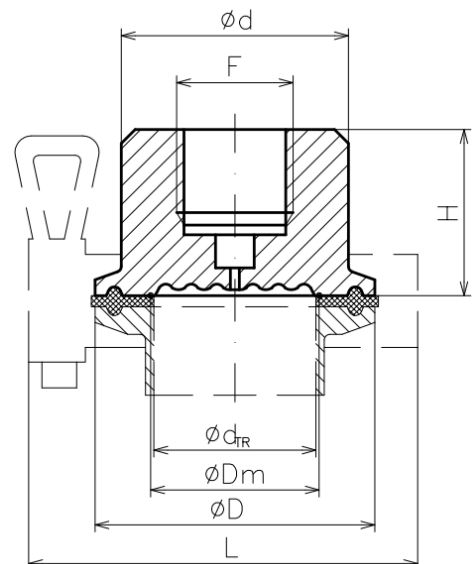
Working temperature

- Medium -20 .. +100 °C
- Ambient -20 ... +60°C
- other conditions on request



Clamp – base types

BHV	PN	F	ØD	ØDm	Ød	H	L
type	[bar]		[mm]				
C20	40	G1/4"	34	23	24	30	75
C25	40	G1/4"	50,5	28	41	30	85
		G1/2"	50,5	28	41	33	85
C32	40	G1/4"	50,5	34	41	30	85
		G1/2"	50,5	34	41	33	85
C40	40	G1/4"	50,5	38	41	30	85
		G1/2"	50,5	38	41	33	85
C50	25	G1/4"	64	48	53	30	100
		G1/2"	64	48	53	33	100
C65	10	G1/2"	91	68	70	33	115



Base type is accordant with standard Tri clamp DIN 32676 per pipe DIN 11850.
Other standards – see a table below.

Assembly with measuring instrument:

The most common assembly of the chemical seal is with a manometer or by direct connection (F thread). It can also be adapted for a variant with an extended neck or cooler or capillary line.

Matching table - dimensions of Clamp for pipe standard for Tri-clamp DIN 32676 and Clamp ISO 2852

BHV type	øD	Ødm	PN	Tri-clamp DIN 32676 pipe DIN 11850				Tri-clamp DIN 32676 pipe ISO 1127				Tri-clamp DIN 32676 pipe ASME BPE					
				DN	øD	pipe	Ød _{TR}	DN	øD	pipe	"	Ød _{TR}	DN	øD	pipe	Ød _{TR}	
*	34	20	40														
C20	34	23	40	20	34	23 x 1,5	20										
*	50,5	20	40					15	50,5	21,3 x 1,6	1/2"	18,1					
*	50,5	23	40					20	50,5	26,9 x 1,6	3/4"	23,7	1"	50,5	25,4 x 1,65	22,1	
*	50,5	26,5	40														
C25	50,5	28	40	25	50,5	29 x 1,5	26										
*	50,5	31	40					25	50,5	33,7 x 2	1"	29,7					
C32	50,5	34	40	32	50,5	35 x 1,5	32						1 1/2"	50,5	38,1 x 1,65	34,8	
C40	50,5	38	40	40	50,5	41 x 1,5	38										
*	64	38	25					32	64	42,4 x 2	1 1/4"	38,4					
*	64	45	25					40	64	48,3 x 2	1 1/2"	44,3					
C50	64	49	25	50	64	53 x 1,5	50						2"	64	50,8 x 1,65	47,5	
*	77,5	60	16					50	77,5	60,3 x 2	2"	56,3	2 1/2"	77,5	63,5 x 1,65	60,2	
C65	91	68	10	65	91	70 x 2	66										
*	91	72	10					65	91	76,1 x 2	2 1/2"	72,1	3"	91	76,2 x 1,65	72,9	

Type	øD	dm	PN	Clamp ISO 2852 pipe ISO 2037				Clamp ISO 2852 pipe ISO 1127				Clamp ISO 2852 pipe ASME BPE					
				DN	øD	pipe	Ød _{TR}	DN	øD	pipe	"	Ød _{TR}	DN	øD	pipe	Ød _{TR}	
*	34	20	40					15	34	21,3 x 1,6	1/2"	18,1					
C20	34	23	40														
*	50,5	20	40														
*	50,5	23	40	25	50,5	25 x 1,2	22,6	20	50,5	26,9 x 1,6	3/4"	23,7	1"	50,5	25,4 x 1,65	22,1	
*	50,5	26,5	40	28	50,5	28 x 1,2	25,6										
C25	50,5	28	40					25	50,5	33,7 x 2	1"	29,7					
*	50,5	31	40	33,7	50,5	33,7 x 1,2	31,3										
C32	50,5	34	40	38	50,5	38 x 1,2	35,6						1 1/2"	50,5	38,1 x 1,65	36	
C40	50,5	38	40					32	50,5	42,4 x 2	1 1/4"	38,4					
*	64	38	25	40	64	40 x 1,2	37,6										
*	64	45	25					40	64	48,3 x 2	1 1/2"	44,3					
C50	64	49	25	51	64	51 x 1,2	48,6						2"	64	50,8 x 1,65	48	
*	77,5	60	16	63,5	77,5	63,5 x 1,6	60,3	50	77,5	60,3 x 2	2"	56,3	2 1/2"	77,5	63,5 x 1,65	59	
C65	91	68	10	70	91	70 x 1,6	66,8										
*	91	72	10					65	91	76,1 x 2	2 1/2"	72,1	3"	91	76,2 x 1,65	72,9	

Type * :no match for this Clamp with a base type seal will be delivered by agreement
Ordering Clamp per standard not mentioned in the table is possible by agreement.

Standard assignment

- clamp ordered with DN [mm] only will be delivered as standard DIN 32676 per pipe DIN 11850
- clamp ordered with DN [inch] only will be delivered as standard DIN 32676 per pipe ASME BPE

Minimal recommended measuring ranges of pressure gauges assembled with seals:

Clamp - type	Gauge	
	DN 63	DN100
C20	10 bar	-
C25	2.5 bar	16 bar
C32	1.6 bar	4 bar
C40	1.0 bar	2.5 bar
C50	0.6 bar	0.6 bar
C65	0.6 bar	0.6 bar